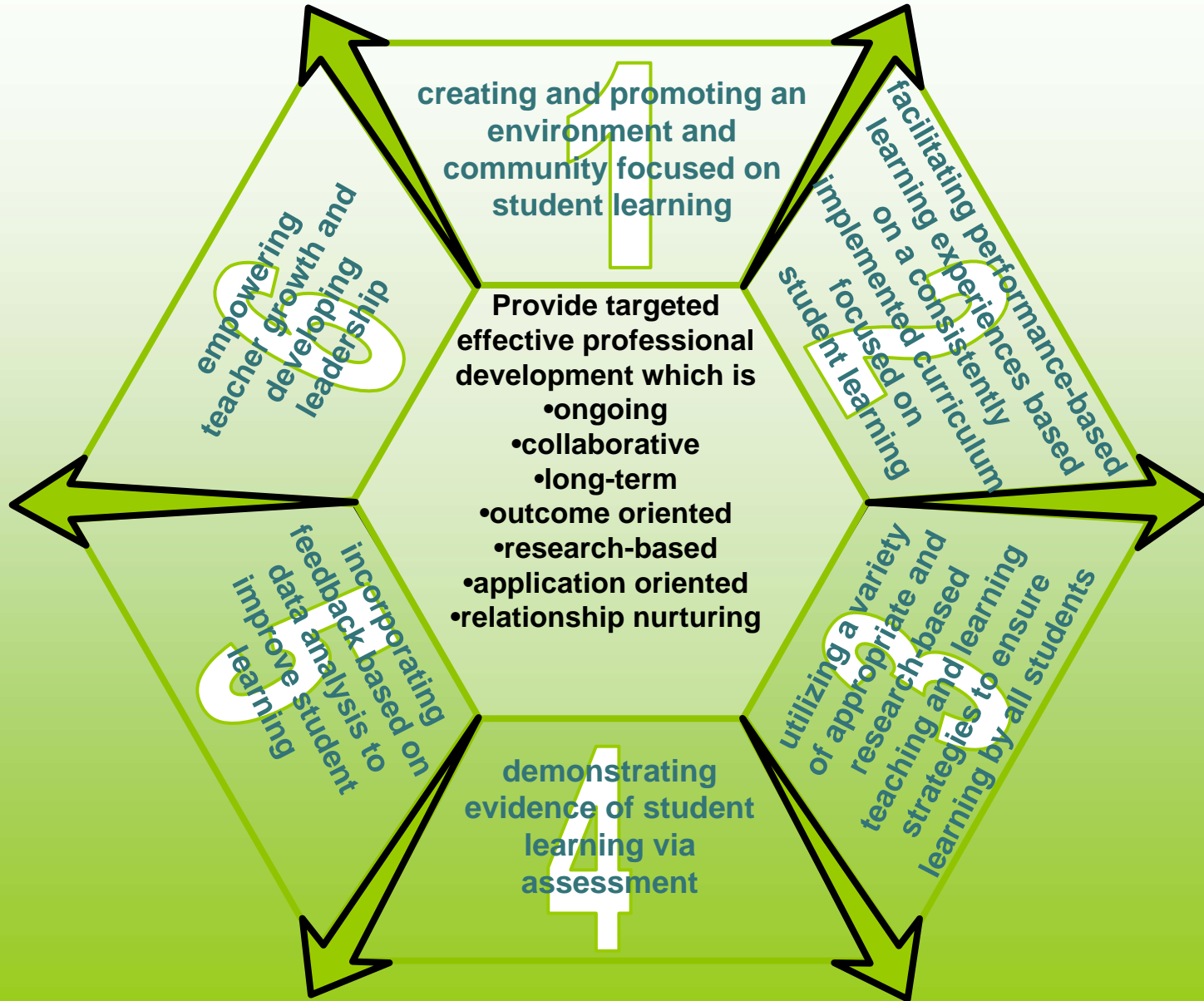
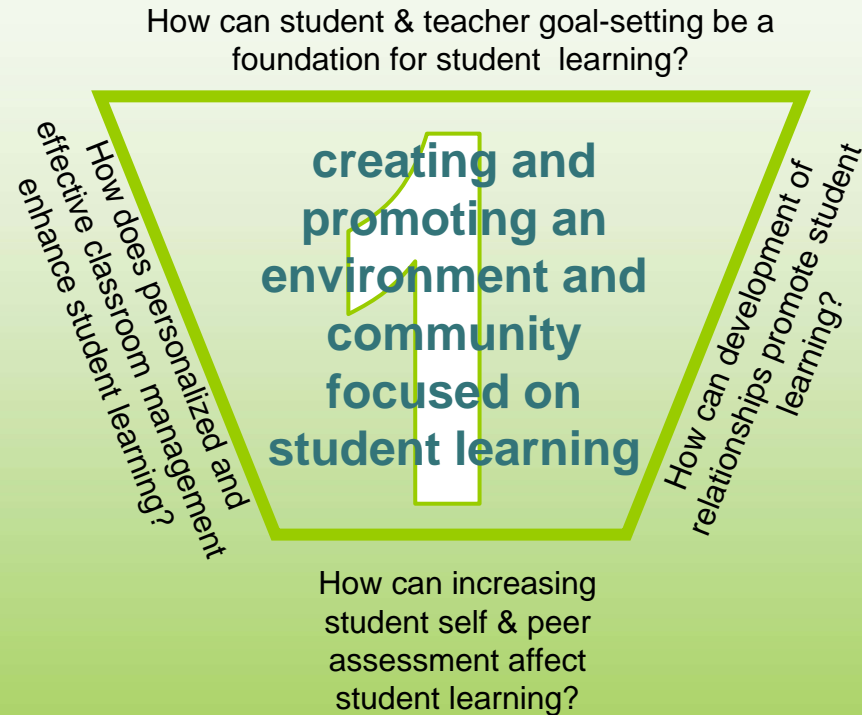


# How can we in our roles as district supervisors increase student language proficiency and teacher efficacy?



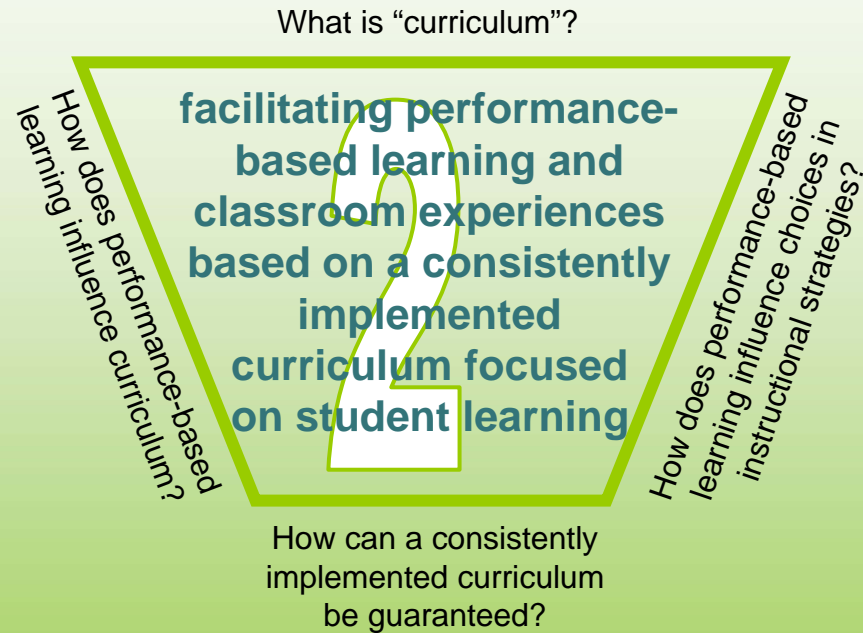
# How can we in our roles as district supervisors increase student language proficiency and teacher efficacy?



Consider how these questions:

- Apply to you currently
- Impact your decisions for future professional learning
- Influence your role as a supervisor
- Alter your lens for world language learning

# How can we in our roles as district supervisors increase student language proficiency and teacher efficacy?

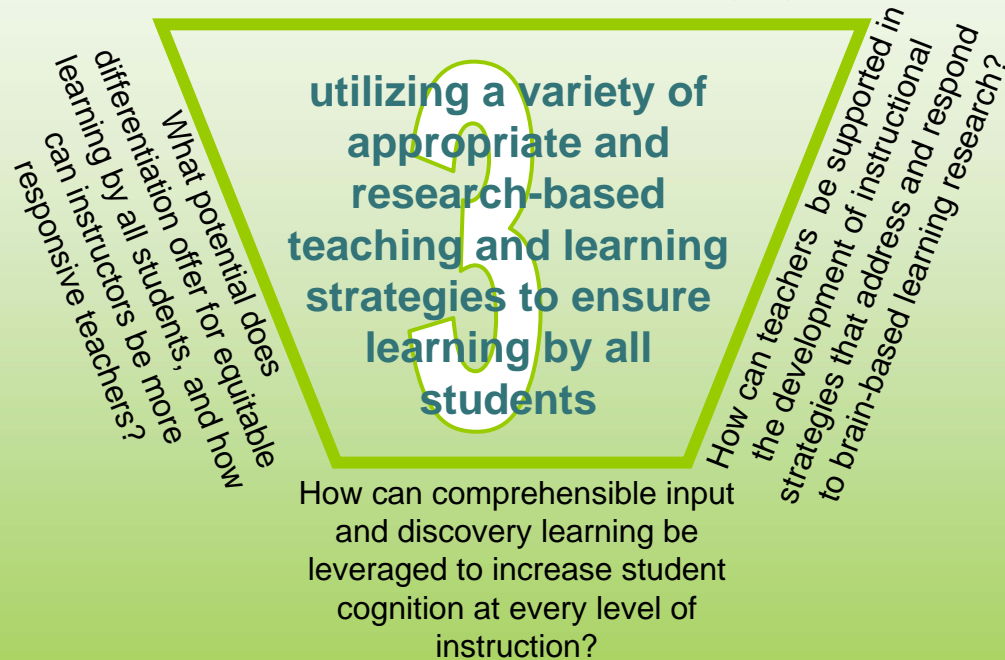


Consider how these questions:

- Apply to you currently
- Impact your decisions for future professional learning
- Influence your role as a supervisor
- Alter your lens for world language learning

# How can we in our roles as district supervisors increase student language proficiency and teacher efficacy?

What strategies lead to participatory learning experiences which allow students opportunities to increase proficiency and skill in the language?

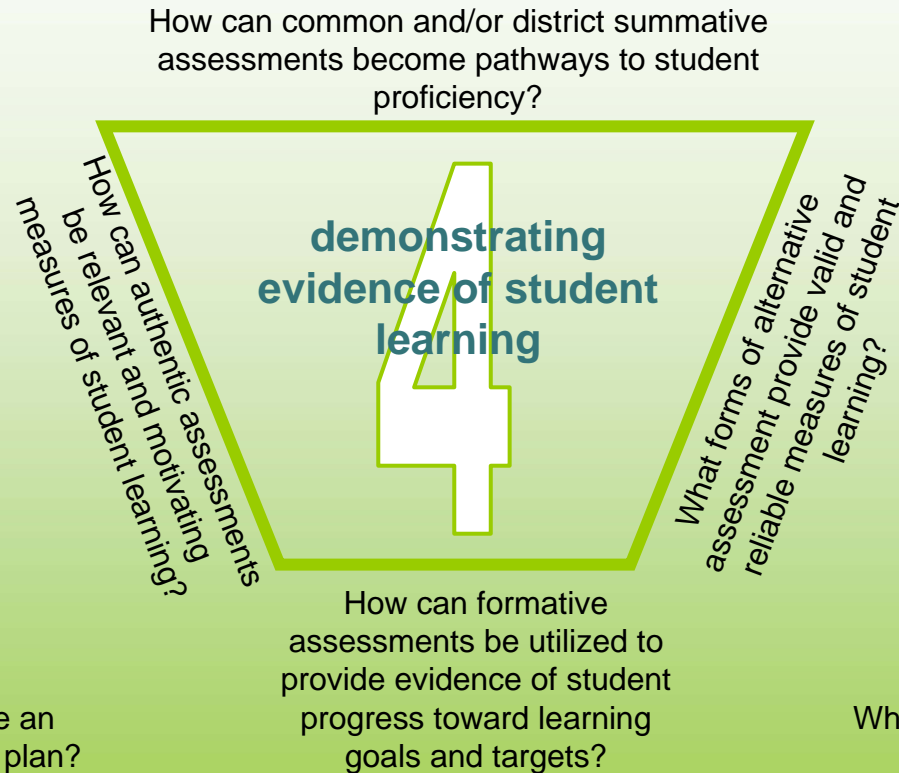


Consider how these questions:

- Apply to you currently
- Impact your decisions for future professional learning
- Influence your role as a supervisor
- Alter your lens for world language learning



# How can we in our roles as district supervisors increase student language proficiency and teacher efficacy?



Why should self-evaluation be an integral part of the assessment plan?

What makes a rubric appropriate or inappropriate?

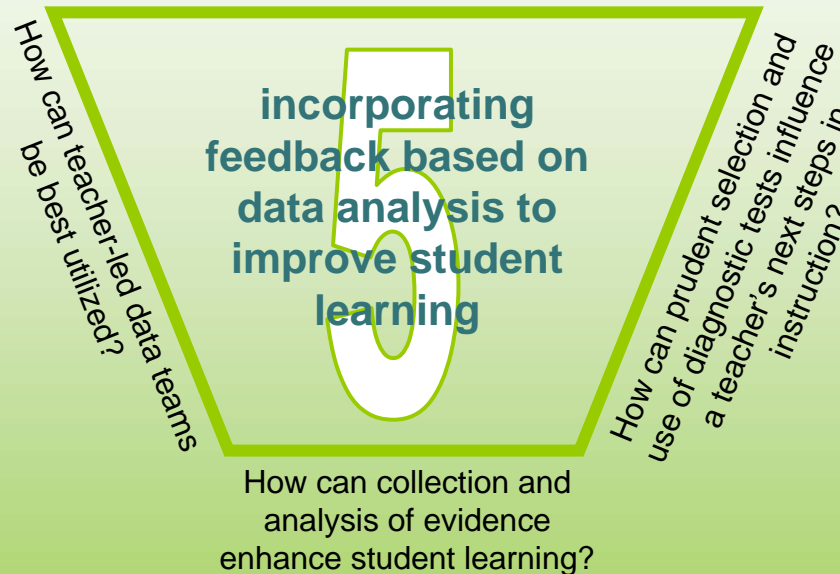


Consider how these questions:

- Apply to you currently
- Impact your decisions for future professional learning
- Influence your role as a supervisors
- Alter your lens for world language learning

# How can we in our roles as district supervisors increase student language proficiency and teacher efficacy?

How can a portfolio of student products motivate, direct, and inspire student performance?



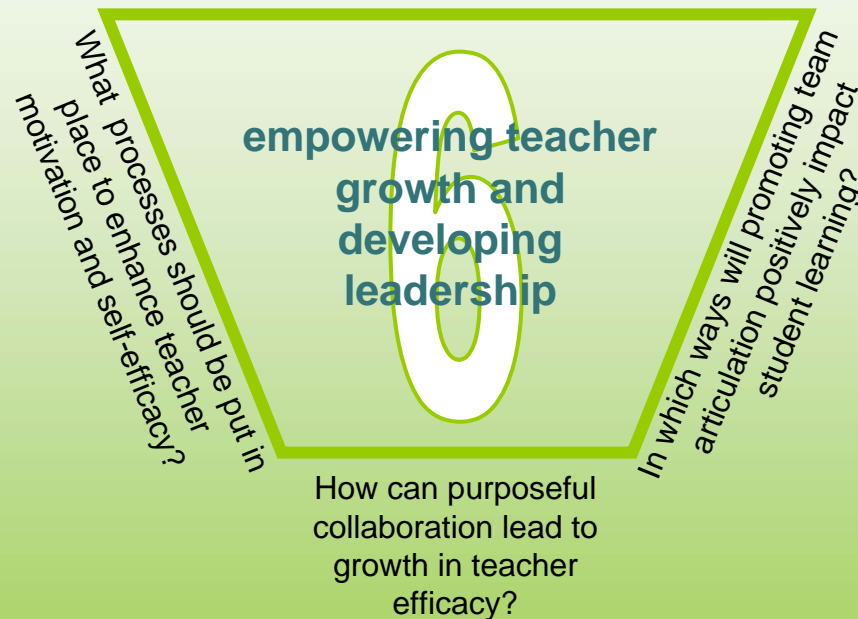
Consider how these questions:

- Apply to you currently
- Impact your decisions for future professional learning
- Influence your role as a supervisors
- Alter your lens for world language learning



# How can we in our roles as district supervisors increase student language proficiency and teacher efficacy?

How can relevant research-based models and frameworks be used to increase both student and teacher efficacy?



Consider how these questions:

- Apply to you currently
- Impact your decisions for future professional learning
- Influence your role as a supervisor
- Alter your lens for world language learning

